



Wick Lane, London, E3

BUTLER & STAG



This exceptional two-bedroom, two-bathroom apartment offers a unique blend of modern living and serene views. Situated on the cusp of the vibrant Hackney Wick, this property boasts a private balcony with views of landscaped gardens.



Leasehold

- 1028 Sq/Ft Internal Living Space
- Two Bedrooms / Two Bathrooms
- Waterside Complex
- Lift Access To All Levels
- Secure Allocated Parking Space
- Private Balcony Overlooking Lush Landscaped Gardens
- EWS1 Compliant
- Hackney Wick Station A Moments Walk Away

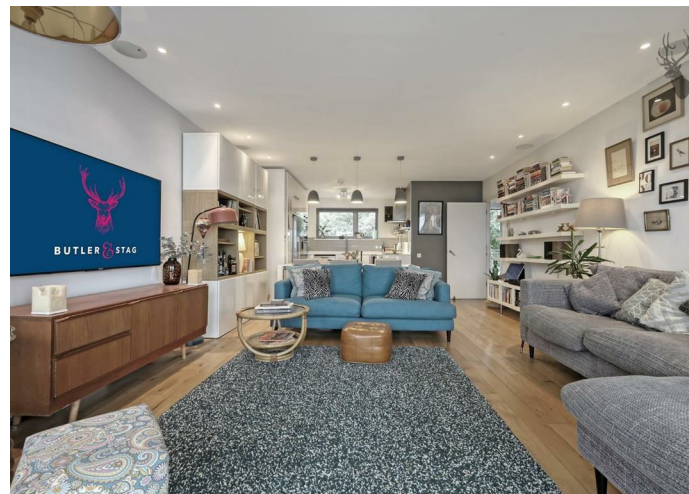
The open-plan living space is designed for comfort and style, providing ample room for entertaining. Large windows flood the area with natural light, creating a bright and inviting atmosphere. The contemporary kitchen is equipped with high-quality appliances, sleek cabinetry, and ample counter space.

Both bedrooms are spacious and well-appointed, offering plenty of storage and large windows that let in an abundance of natural light.

There are two well-designed bathrooms, both feature modern fixtures and fittings, providing a luxurious space to unwind and refresh.

Step outside to your own private balcony, where you can enjoy morning coffee or evening drinks while taking in lush green views of the landscaped gardens. This outdoor space is perfect for relaxation and al fresco dining.

Nestled on the cusp of Hackney Wick, you'll be at the heart of one of London's most dynamic and creative neighbourhoods. Enjoy easy access to an array of cafes, restaurants, galleries, and green spaces, as well as excellent transport links to the rest of the city.

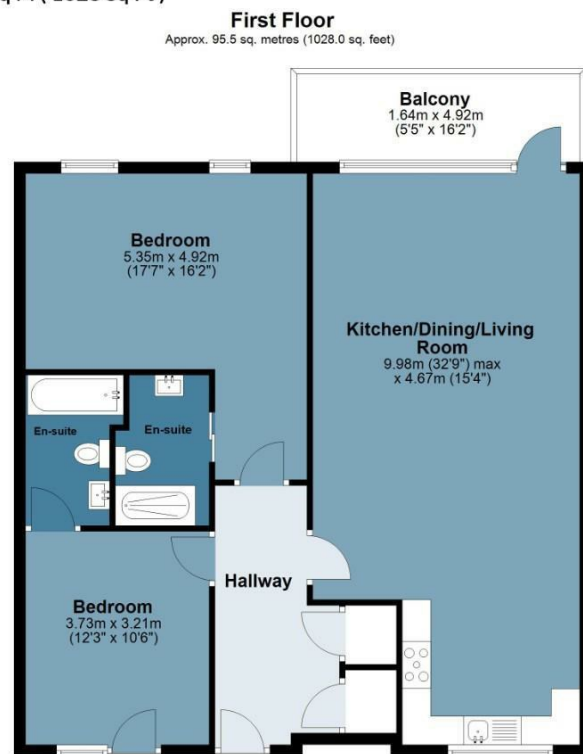




Wick Lane

Approx. Gross Internal Area 95.5 Sq M (1028 Sq Ft)

BUTLER & STAG



Measurements are approximate and for illustration purposes only. While we do not doubt the accuracy and completeness, we advise you conduct a careful independent assessment of the property to determine monetary value.
© @modephotouk www.modephoto.co.uk

IMPORTANT NOTICE - These particulars have been prepared in good faith and they are not intended to constitute part of an offer or contract. We have not performed a structural survey on this property and the services, appliances and specific fittings have not been tested. All photographs, measurements, floor plans and distances referred to are given as a guide and should not be relied upon.

BUTLER & STAG

☎ 020 8102 1236

🏠 508 Roman Road, Bow, London, E3 5LU

✉ bow@butlerandstag.com

www.butlerandstag.uk